

# lunar

DESIGN  
MATTEO NUNZIATI

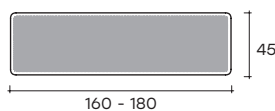
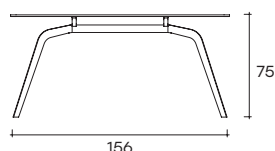
modello registrato  
registered model



Consolle con piano in vetro da 12 mm fuso a gran fuoco, temperato e retroverniciato con tinte metallizzate. Base in metallo verniciato, finitura Grigio Lava.

*Console with 12 mm fused, tempered and back-lacquered glass top with metallic paints. Painted metal base, "Lava Grey" finish.*

portata sul piano: 50 kg  
load capacity on top: 50 kg



dimensioni L, P, H  
dimensions L, W, H  
(cm)

COD./CODE

L

P/W

H

peso netto  
net weight  
(kg)

peso lordo  
gross weight  
(kg)

volume imballo  
package volume  
(m<sup>3</sup>)

Consolle con piano in vetro fuso.  
Console with fused glass top.

**LU160/VF- \_**

160

45

75

39

68

0,43

**LU180/VF- \_**

180

45

75

41

71

0,45

## VETRO RETROVERNICIATO \_ BACK PAINTED GLASS

CAT. COLORE COLOR CAT.	COLORI COLORS	Vetro trasparente fuso Fused transparent glass
CAT.2 Tinta metallizzata Metallic color	Grigio lava Lava grey	<b>VF-LA</b>
	Champagne Champagne	<b>VF-CH</b>
	Marrone brillante Brilliant brown	<b>VF-MB</b>
	Nero brillante Brilliant black	<b>VF-NB</b>

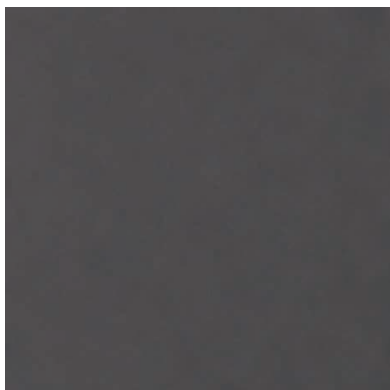
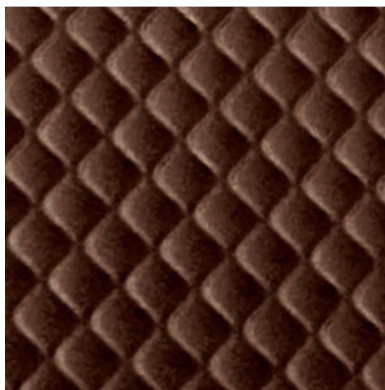
Lunar è disponibile anche nelle altre finiture di Cat.2 per vetro fuso.

*Lunar is also available in the other finishes of fused glass Cat.2.*

---

**FINITURE**  
**FINISHES**

---

**Base in metallo**  
**Metal base**grigio lava  
lava grey**Piano in vetro fuso retroverniciato**  
**Back-painted fused glass top**grigio lava  
lava greychampagne  
champagnenero brillante  
brilliant blackmarrone brillante  
brilliant brown