

MIDJ

Lea SG TS Stool

design Paolo Vernier, 2019

Lea stool with swivel and height adjustable base in metal.

Seating upholstered in fabric, leather or faux leather.



Colors and Materials

Structure



Papaya orange steel



Light blue metal



White steel



Ocean blue steel



Bronze metal



Sand steel



Fango steel



Golden yellow metal



Pastel yellow steel



Grafite metal



Ash grey metal



Light grey steel



Brown steel



Black steel



Ocher steel



Facepowder pink metal



Red steel



Bulgaro red metal



Cherry red metal



Pine green steel



Sage green metal

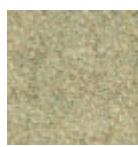


Dark green metal

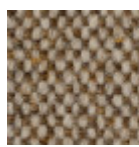
Coating



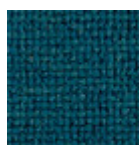
Cotton Club fabric
14 Colors



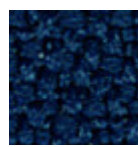
Fenix Wool fabric
16 Colors



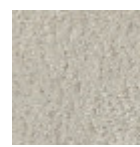
Main Line Flax fabric
16 Colors



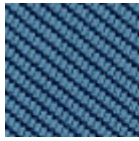
Manhattan fabric
13 Colors



Mirage fabric
15 Colors



Novabuk fabric
17 Colors



Tessuto Oceanic
13 Colors



Remix 3 fabric
19 Colors



Second fabric
11 Colors



Velvet Superb
15 Colors



Uniform Melange Fabric
7 Colors



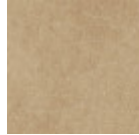
Visual fabric
13 Colors



Yoredale fabric
14 Colors



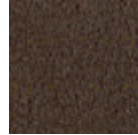
Secret faux leather
23 Colors



Vintage faux leather
12 Colors



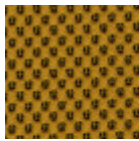
Fiore leather
21 Colors



Vintage leather
8 Colors



Flame Fabric
7 Colors



Network fabric
9 Colors

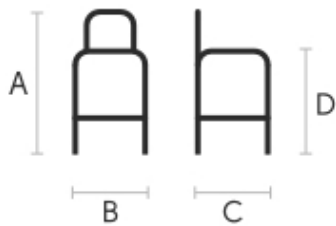


Ouche Fabric
7 Colors



Plain Fabric
7 Colors

Dimensions



	cm	inch
A	85/114	33.5/44.9
B	49	19.3
C	56	23.2
D	67/82	26.4/32.3

Volumetric Details

Weight 17 Kg
Volume 0.20 mc
Package 1

Materials Certifications

Dark green metal

The technologies used in the previous phase of powder coating play a fundamental role in the final result of the processing. They are in fact essential to increase adherence paint on the metal surface and then guarantee its duration over time. The metal frames, following a total cleaning of the surface, pass through chemical conversion processes, creating a compact base that allows for better adhesion of the subsequent treatment. In the last phase the object subjected to the powder coating process is placed in a polymerization oven, going to form an adherent and extremely tight layer durable. This particular paint job is ideal for outdoor use.

To clean the surface, use a damp microfiber cloth with neutral soap or specific metal cleaning products. Avoid hitting or rubbing the surface with sharp objects. Do not use scourers or other abrasive materials, since they would inevitably scratch the surface. Do not leave rusty iron objects on the surface for too long.

These surface treatments are not suitable for outdoor use, but they guarantee excellent resistance to frequent use, dirt and dust.