

FINITURE E TESSUTI

FINISHES & FABRICS

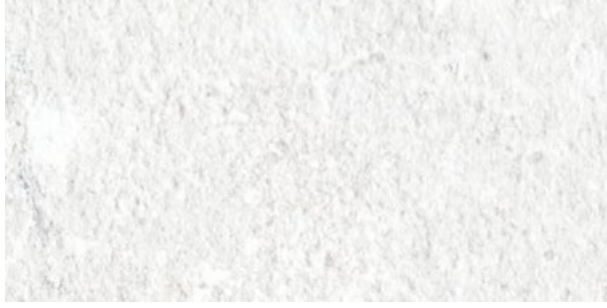
TAVOLI
SEDIE
SGABELLI
LETTI IN FERRO

TABLES
CHAIRS
BARSTOOLS
IRON BEDS

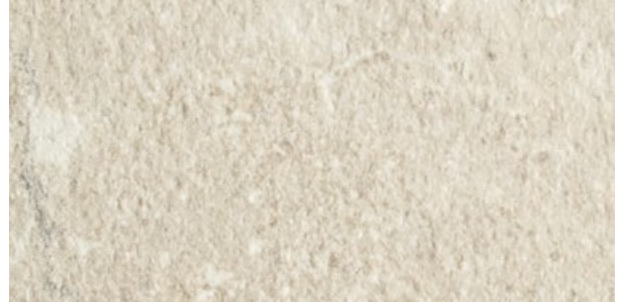
INGENIA
CASA

UNICOLOR ANTIGRAFFIO

SCRATCH-RESISTANT UNICOLOR | UNICOLOR ANTI-RAYURES | KRATZFESTIG UNICOLOR | UNICOLOR ANTI-ARAÑAZOS | UNICOLOR УСТОЙЧИВЫЙ К ЦАРАПИНАМ



D007 Bianco | White | Blanc | Weiß | Blanco | Белый



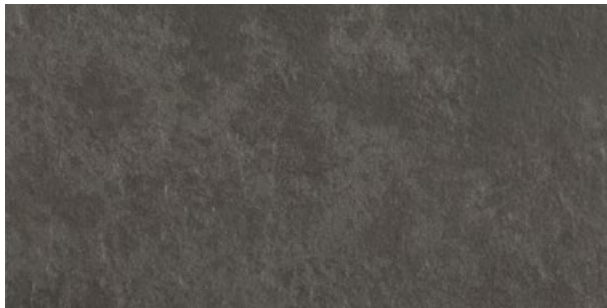
D004 Pietra di Nanto | Nanto's stone | Pierre de Nanto | Nanto Stein | Piedra de Nanto | Камень Нанто



D005 Porfido | Porphyry | Porphyre | Porphyr | Porfido | Порфир



D006 Pietra lavica | Lava stone | Pierre de Lave | Lava Stein | Piedra Lavica | Лавовый камень



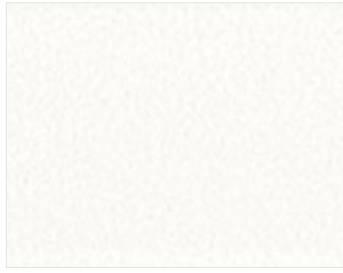
D003 Brown stone | Brown stone | Brown stone | Brauner Stein | Piedra Marrón | Коричневый камень

METALLO

METAL | MÉTAL | METALLE | METAL | МЕТАЛЛЫ



M089 Alluminio | Aluminium | Aluminium | Aluminium | Alumínio | Алюминий



M306 Bianco | White | Blanc | Weiß | Blanco | Белый



M312 Sabbia | Sand | Sable | Sand | Arena | Песочный



M318 Celeste | Light blue | Bleu clair | Hell blau | Celeste | Лазурный



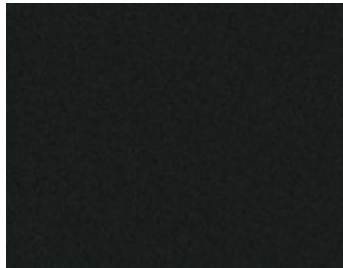
M316 Blu | Blue | Bleu | Blau | Azul | Синий



M310 Antracite | Anthracite | Anthracite | Anthrazit | Antracita | Антрацит



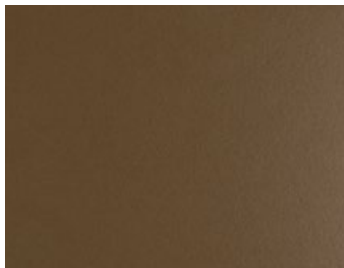
M307 Testa di moro | Dark brown | Marron foncé | Dunkelbraun | Marrón oscuro | Темно-коричневый



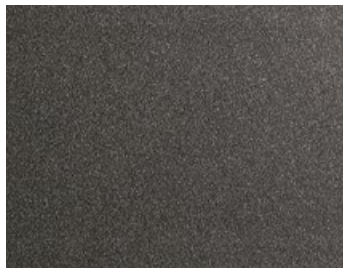
M055 Nero | Black | Noir | Schwarz | Negro | Черный



M097 Grigio chiaro | Light grey | Gris clair | Hell grau | Gris claro | Светло-серый



M028 Ottone scuro | Dark brass | Laiton foncé | Dunkelmessing | Latón oscuro | Тёмная латунь



M030 Titanio | Titanium | Titane | Titan | Titanio | Титан

LEGGNO: MASSELLO | MASSELLATO | IMPIALLACCIATO | LACCATO

WOODS: solid/vee ner with solid wood edge/veener/lacquered |

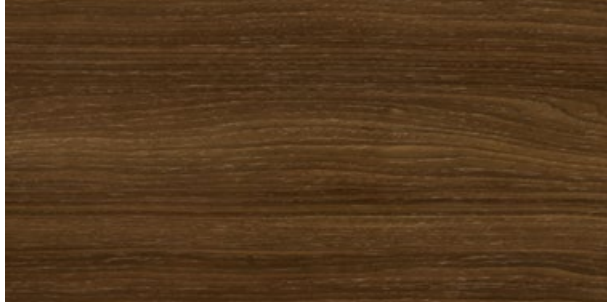
BOIS: massif/plaqué avec bords en bois massif/plaquê/laqué |

HOLZ: Massivholz/furniert mit massiv Holz Rand/furniert/lackiert |

MADERA: maciza/chapada con cantos en madera maciza/chapada/lacada |

ДЕРЕВО: массив/шпон с краями из массива/шпон/лакированное

INGENIA
CASA



L002 Rovere Spessart impiallacciato | *Spessart oak veneer* |
Chêne Spessart plaqué | *Eiche Spessart furniert* |
Roble Spessart chapado | Шпон из дуба Spessart



L009 Rovere naturale impiallacciato | *Natural oak veneer* |
Chêne naturel plaqué | *Eiche Natur furniert* | *Roble natural chapado* |
Шпон из натурального дуба

L209 Rovere naturale massellato | *Natural oak veneer with solid wood edge* |
Chêne naturel plaqué avec bords en bois massif |
Eiche Natur furniert mit massiv Rand |
Roble natural chapado con cantos de madera maciza |
Шпон из натурального дуба с краями из массива



L036 Noce impiallacciato | *Walnut veneer* | *Noyer plaqué* |
Nußbaum furniert | *Nogal chapado* | Шпон Орех

L206 Noce Massellato | *Walnut veneer with solid wood edge* |
Noyer plaqué avec bords en bois massif | *Nussbaum furniert mit massiv Rand* |
Nogal chapado con cantos de madera maciza |
Шпон Ореха с краями из массива

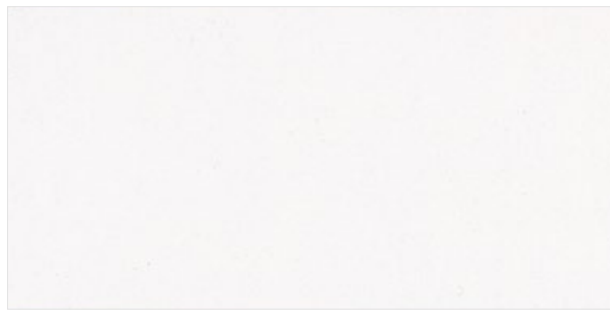
LEGGNO: MASSELLO | MASSELLATO |
LEGGNO IMPIALLACCIATO | LACCATO
4_A

LEGNI E MELAMINICI

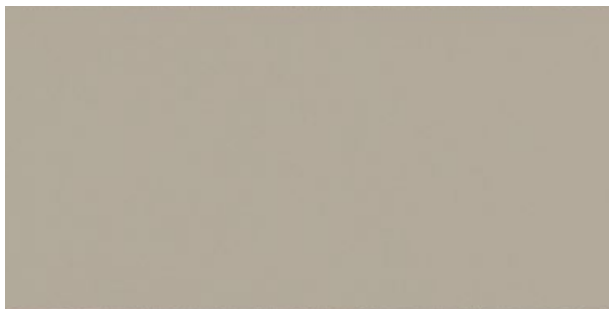
WOODS AND MELAMINES | BOIS ET MÉLAMINES | HOLZ UND MELAMIN | MADERAS Y MELAMINAS | ДЕРЕВО И МЕЛАМИН



L072 Melaminico alluminio | *Melamine aluminium* | *Mélamine aluminium* | *Melamin aluminium* | *Melamina aluminio* | *Меламин алюминий*



L079/L043 Legno laccato bianco/Melaminico bianco | *White gloss lacquered wood/Melamine white* | *Bois laqué blanc/Mélamine blanc* | *Holz weiß lackiert/Melamin weiss* | *Madera lacada blanco/Melamina blanca* | *Дерево лакированное белое/Меламин белый*



L084/L044 Legno laccato sabbia/Melaminico sabbia | *Sand lacquered wood/Melamine sand* | *Bois laqué sable/Mélamine sable* | *Holz sand lackiert/Melamin sand* | *Madera lacada arena/Melamina arena* | *Дерево лакированное песочное/Меламин песочный*



L087/L045 Legno laccato antracite/Melaminico antracite | *Anthracite lacquered wood/Melamine anthracite* | *Bois laqué anthracite/Mélamine anthracite* | *Holz anthrazit lackiert/Melamin anthrazit* | *Madera lacada antracita/Melamina antracita* | *Дерево лакированное антрацит/Меламин антрацит*

MELAMINICO MATERICO

MELAMINE | MÉLAMINE | MELAMIN | MELAMINA | МЕЛАМИН

INGENIA
CASA



L058 Cemento sabbia | Concrete sand | Béton sable | Zement sand |
Cemento arena | Цемент песок



L059 Cemento talpa | Concrete grey | Béton taupe | Zement grau |
Cemento gris topo | Цемент крот



L055 Canyon oak | Canyon oak | Chêne Canyon | Eiche Canyon |
Roble canyon | Дуб каньон



L054 Cemento naturale | Natural concrete | Béton naturel | Zement natur |
Cemento natural | Цемент натуральный



L050 Larice grigio | Grey Larch | Mélèze gris | Lärche grau | Alerce Gris |
Серая Лиственница



L051 Barrique | Barrique | Barrique | Barrique | Barrica | Barrique

MELAMINICO MATERICO

4_{BIS}

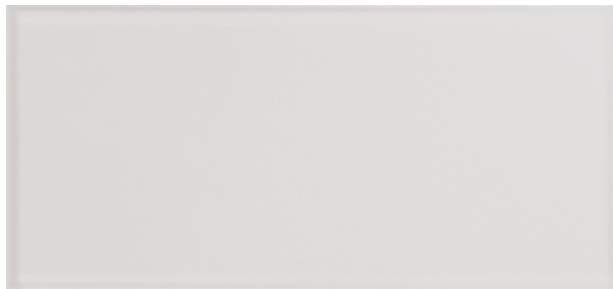
CRISTALLO

GLASS | VERRE | GLAS | CRISTAL | СТЕКЛО

INGENIA
CASA



C150 Extrawhite lucido | Glossy Extrawhite | Extrawhite brillant | Hochglänzend extraweiß | Extrawhite brillo | Экстра-белый глянцевый



C180S Velvet antigraffio bianco opaco | Velvet matt anti-scratch white | Velvet anti-rayures blanc opaque | Kratzfestig velvet weiß matt | Velvet anti-arañazos blanco opaco | Вельвет, устойчивый к царапинам, матовый белый



C193 Laccato tortora lucido | Glossy dove grey lacquered | Laqué gris tourterelle brillant | Hochglänzend taubengrau lackiert | Lacado gris ceniciento brillo | Лакированный серо-бежевый глянцевый



C181S Velvet antigraffio tortora opaco | Velvet matt anti-scratch dove grey | Velvet anti-rayures gris tourterelle opaque | Kratzfestig velvet taubengrau matt | Velvet anti-arañazos gris ceniciento opaco | Вельвет, устойчивый к царапинам матовый серо-бежевый



C196 Laccato antracite lucido | Glossy anthracite lacquered | Laqué anthracite brillant | Hochglänzend anthrazit lackiert | Lacado antracita brillo | Лакированный антрацит глянцевый



C183S Velvet antigraffio antracite opaco | Velvet matt anti-scratch anthracite | Velvet anti-rayures anthracite opaque | Kratzfestig velvet anthrazit matt | Velvet anti-arañazos antracita opaco | Вельвет, устойчивый к царапинам, матовый антрацит



C152 Laccato nero lucido | Glossy black lacquered | Laqué noir brillant | Hochglänzend schwarz lackiert | Lacado negro brillo | Лакированный черный глянцевый

01 CRISTALLO

CRISTALLO

GLASS | VERRE | GLAS | CRISTAL | СТЕКЛО



C166 Laccato grigio chiaro lucido | *Glossy light grey lacquered* |
Gris clair brillant | *Hochglänzend hell grau lackiert* |
Lacado gris claro brillo | *Глянцевый лакированный светло-серый*



C186S Velvet antigraffio grigio chiaro opaco |
Velvet matt anti-scratch light grey lacquered | *Velvet anti-rayures gris clair opaque* |
Velvet kratzfestig hell grau matt lackiert | *Velvet anti-arañazos gris claro opaco* |
Вельвет, устойчивый к царапинам, матовый светло-серый

Il cristallo velvet antigraffio è caratterizzato dalla finitura opaca che lo rende caldo e piacevole al tatto generando un effetto seta, vellutato e morbido.

Il cristallo viene sottoposto ad uno speciale trattamento chimico fisico adoperato grazie ad una tecnologia di ultima generazione denominata "corrosione dinamica" che rende più difficoltosa la formazione di possibili graffi solitamente più evidenti sulle superfici lisce.

Anti scratch velvet glass is characterized from a matt finish that makes it warm and pleasant to touch, creating a "silk effect", soft and smooth.

The scratch-resistant glass surface is treated with a specific chemical treatment thanks to an ultimate technology called "dynamic corrosion" that allow smoothing of micro ridges generated by common etching. The smoothing of the ridges deters the appearance of scratches.

**MORBIDEZZA AL TATTO** | WARM AND PLEASANT TO TOUCH**ELEVATA RIPARABILITÀ DEI GRAFFI** | SCRATCHES HIGH REPARABILITY**METODO DI PULIZIA E MANUTENZIONE** | CLEANING AND MAINTENANCE INSTRUCTIONS

Per la pulizia di questi piani si consiglia di intervenire con un panno morbido e schiuma attiva per vetri e cristalli.

Non spruzzare direttamente il prodotto sul piano ma sul panno.

Non usare prodotti oleosi, grassi e diluenti.

Nel caso in cui vengano versati sul piano liquidi particolarmente aggressivi o macchianti quali ad esempio: vino, coca-cola, succhi di frutta, aceto, limone etc... rimuovere immediatamente il liquido con un panno morbido e schiuma attiva per vetri e cristalli come precedentemente indicato.

L'azienda produttrice non sarà responsabile per danneggiamenti derivanti dall'utilizzo non corretto del prodotto o dalla pulizia effettuata con agenti smacchianti diversi da quelli indicati con le specifiche modalità.

For daily cleaning, use a soft cloth dampened with an approved product for glass cleaning.

Do not spray the product directly on the glass top. Instead, spray the cloth and gently wipe the glass.

Do not use oily, greasy or thinner products.

In the event of an accidental spill of liquids such as wine, carbonated beverages, juices, vinegar, lemon and so on, clean the spill with the soft cloth dampened with the approved glass cleaner.

For a larger spill, absorb some of the liquid with a quality paper towel, then proceed with cleaning with the soft cloth.

Company will not be responsible for damages due to improper cleaning procedures.

SUPERCERAMICA

SUPERCERAMIC | SUPERCERAMIQUE | SUPERKERAMIK | SUPERCERAMICA | СУПЕРКЕРАМИКА

INGENIA
CASA



CR003/CR003A Bianco | White | Blanc | Weiß | Blanco | Белый



CR005/CR005A Sabbia | Sand | Sable | Sand | Arena | Песочный



CR002/CR002A Antracite | Anthracite | Anthracite | Anthrazit | Antracita | Антрацит



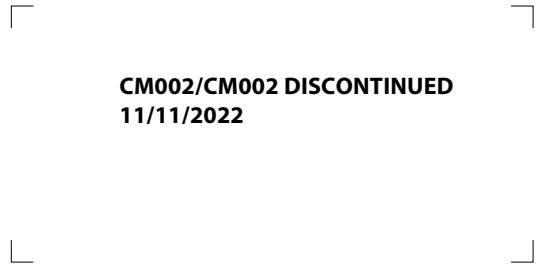
CR006/CR006A Grigio Savoia | Savoia Grey | Gris Savoia | Grau Savoia | Gris Savoia | Серый Савойя

SUPERMARMO

SUPERMARBLE | SUPERMARBRE | SUPERMARMOR | SUPERMÁRMOL | СУПЕРМАРОП

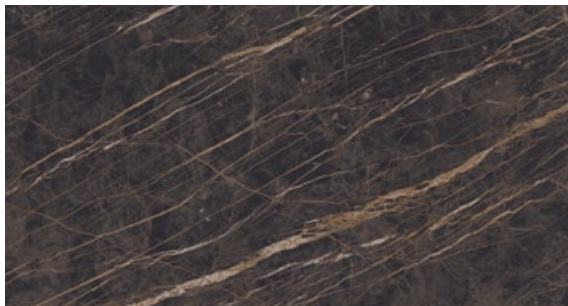


CM007/CM007A Bianco Statuario Opaco | Matt White | Blanc Opaque | Matt Weiß | Blanco Opaco | матовый скульптурный белый



CM002/CM002 DISCONTINUED
11/11/2022

CM002/CM002A Grigio Serena Opaco | Matt Grey | Gris Opaque | Matt Grau | Gris Opaco | Серый Серена Матовый



CM005/CM005A Noir Desir lucido | Glossy Noir Desir | Noir Desir brillant | Noir Desir hochglänzend | Cava Noir Desir brillo | Noir Desir глянцевый

SUPERCERAMICA | SUPERMARMO

0A

SUPERCERAMICA | SUPERMARMO

SUPERCERAMIC | SUPERCERAMIQUE | SUPERKERAMIK | SUPERCERAMICA | СУПЕРКЕРАМИКА
SUPERMARBLE | SUPERMARBRE | SUPERMARMOR | SUPERMÁRMOL | СУПЕРМРАМОЛ



INFINITO | *EVERLASTING*



IDRO/OLEO REPELENTE | *HYDRO OIL REPELLENT*



IGIENICO/ATOSSICO | *HYGIENIC/NON-TOXIC*



INALTERABILE AGLI ACIDI | *CHEMICAL RESISTANT*



ANTIGRAFFIO/ELEVATA DUREZZA
RESISTANT/BREAKAGE RESISTANT ANTI-RAYURES



IGNIFUGO | *FIRE RETARDANT*



MINIMO SPESSORE MASSIMA RESISTENZA
MINIMUM THICKNESS MAXIMUM RESISTANCE



ECO-COMPATIBILE | *ECO-FRIENDLY*



RICICLABILE | *RECYCLABLE*