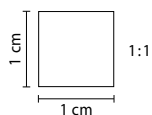


TESSUTI-ECOPELLI-PELLI  
MELAMINICI-DIALUX-VETRI  
LACCATURE-DECORAZIONI

*Fabrics - Eco leathers - Leathers  
Melamine - Dialux - Glasses  
Lacquered - Decorations*

# Finishings

clei



TB117 PETIT 100/GELATO  
CAT. 1



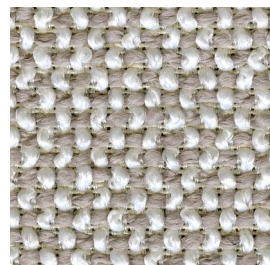
BS GULP/32 PACE  
CAT. 4



BS SMILE/2 BETULLA  
CAT. 1



TB117 ROGER/14 PERGAMENA  
CAT. 1



TB117 GUAREI/1 LIMBO  
CAT. 2



TB117 1407/11 SABBIA  
CAT. 2



TB117 KATMANDU/1 STELLA ALPINA  
CAT. 4



TB117 INKA/2 MARMO  
CAT. 3



14832/25 CALCE  
CAT. 1



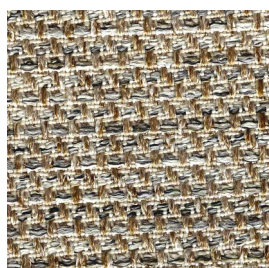
TB117 1986/7 CIVETTA  
CAT. 1



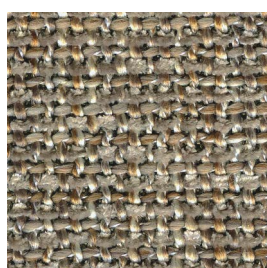
TB117 JOKER/2 CERULEO  
CAT. 2



TB117 NANAQ/42 PAIRO  
CAT. 3



TB117 BS DOROTY/63 SPIGA  
CAT. 2



TB117 BOGART/3 QUINOA  
CAT. 2



TB117 BS PASCIÀ/4 CARGO  
CAT. 3



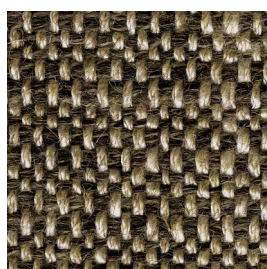
TB117 BS NUUR/15 SASSO  
CAT. 3



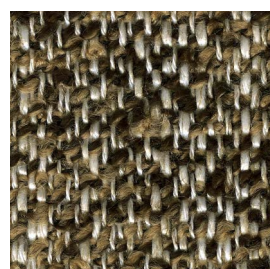
T221/5 CARAMELLO  
CAT. 1



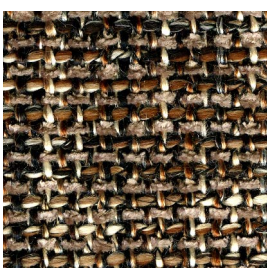
TB117 PASTELLO/8 SAFARI  
CAT. 2



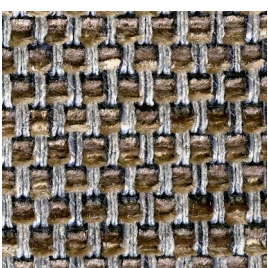
TB117 KATMANDU/1/12 NAMIBIA  
CAT. 4



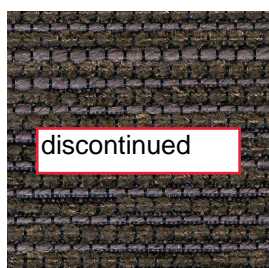
TB117 BS COLMAR/74 TARTARUGA  
CAT. 2



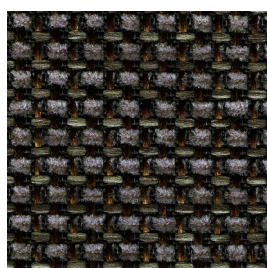
TB117 BOGART/4 MOCACCINO  
CAT. 2



TB117 VALENCIA/105 SIGARO  
CAT. 2



TB117 14832/4 LIQUIRIZIA  
CAT. 1

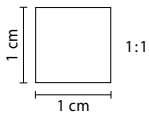


TB117 BS EGEO/64 VESUVIO  
CAT. 2



T221/11 ETNA  
CAT. 1





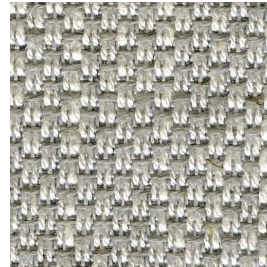
TB117 RITZ/94 BRUNO  
CAT. 1



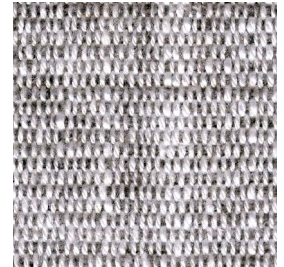
5120/5 BRAULIO  
CAT. 3



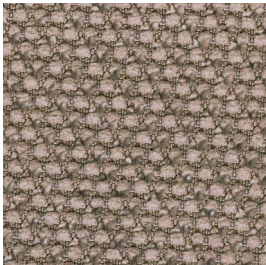
ELISSOS/1 FIOR DI COTONE  
CAT. 3



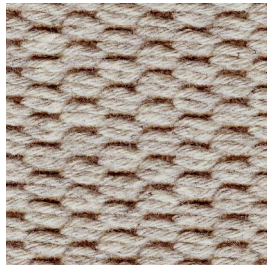
TB117 BS MAYA/21 GRANITO  
CAT. 3



T124/105 GABBIANO  
CAT. 4



TB117 RITZ/37 CHIARO DI LUNA  
CAT. 1



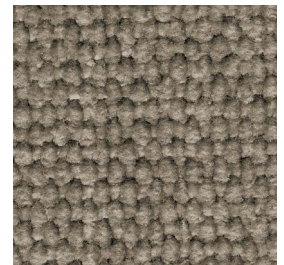
SINFONIA/31 GHIAIA  
CAT. 3



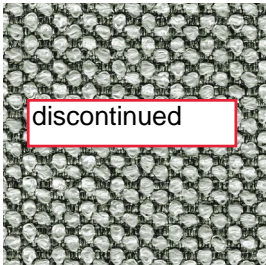
BS SMILE/21 SALE  
CAT. 1



TB117 BS NUUR/14 RUSCELLO  
CAT. 3



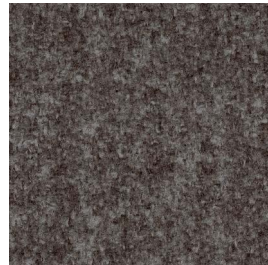
BS GULP/28 CERTOSINO  
CAT. 4



TB117 1986/6 FREDDO  
CAT. 1



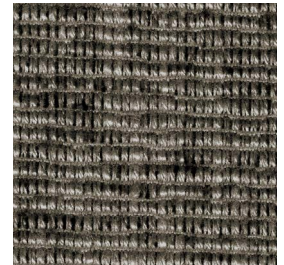
TB117 VALENCIA/301 CEMENTO  
CAT. 2



TB117 BS ZAK/21 GRIGIO WOOL  
CAT. 2



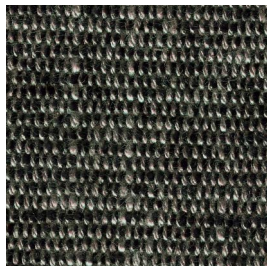
TB117 MYSTIC/12 CICILLA  
CAT. 2



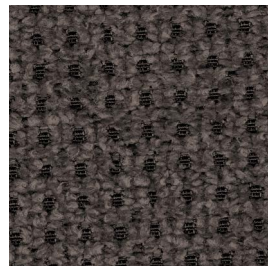
TB117 INKA/12 PIETRA  
CAT. 3



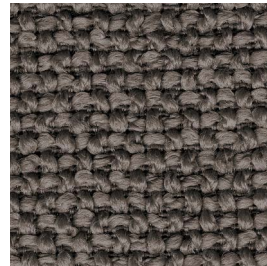
TB117 14832/24 TEMPESTA  
CAT. 1



T124/106 SALE PEPE  
CAT. 4



T221/27 FOCA  
CAT. 1



GUAREI/17 PALUDE  
CAT. 2



BOGART/6 AQUILA  
CAT. 2

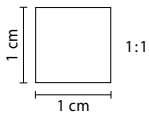


ROGER/56 BALENA  
CAT. 1

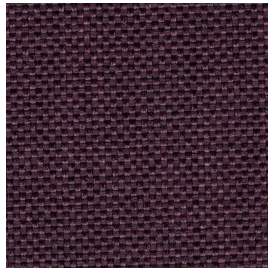


BS MAYA/10 FERRO  
CAT. 3





T221/90 BARBABIETOLA  
CAT. 1



T230/90 VINO  
CAT. 1



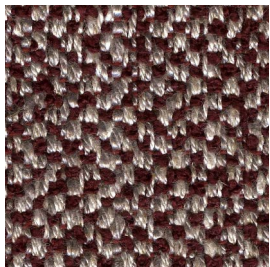
MOGANI/11510 MALVA  
CAT. 1



TB117 1985/10 AZALEA  
CAT. 2



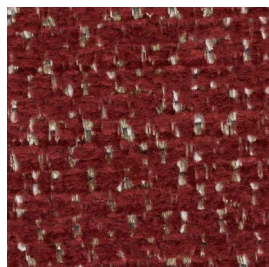
BS GULP/8 BOLLA  
CAT. 4



TB117 CHEVRON/14 MELOGRANO  
CAT. 3



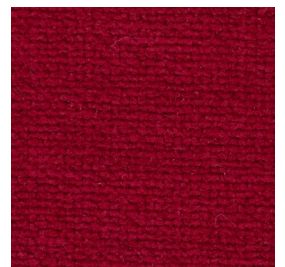
TB117 BS VEGA/142 AUTUNNO  
CAT. 3



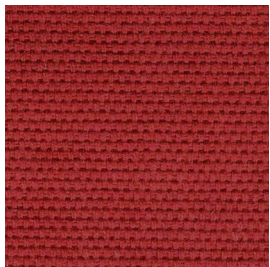
TB117 NANA0/28 CARDINALE  
CAT. 3



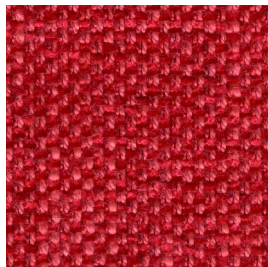
TB117 GUAREI/11 BACCA  
CAT. 2



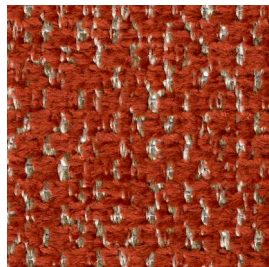
TB117 MYSTIC/38 CARTELLINO  
CAT. 2



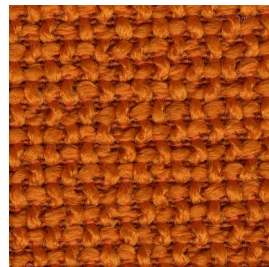
MOGANI/11512 PORPORA  
CAT. 1



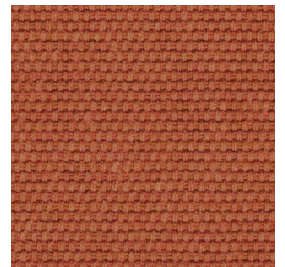
TB117 1810/36 CILIEGIA  
CAT. 3



TB117 NANA0/55 TRAMONTO  
CAT. 3



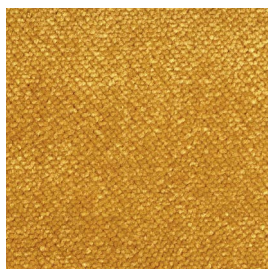
TB117 GUAREI/13 AMSTERDAM  
CAT. 2



MOGANI/11513 CANYON  
CAT. 1



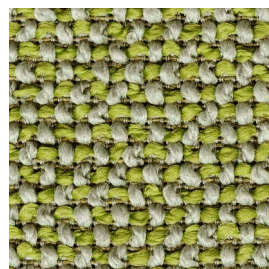
TB117 MYSTIC/71 TRUMP  
CAT. 2



T114/76 SUMMER  
CAT. 2



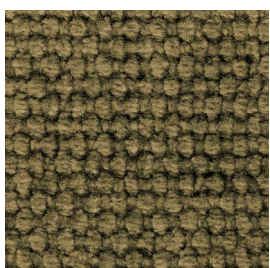
T227/28 WHISKY  
CAT. 2



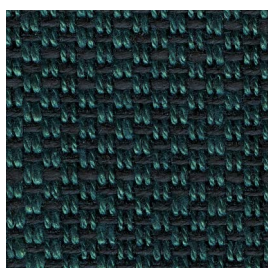
TB117 GUAREI/15 IRLANDA  
CAT. 2



T227/24 SCARABEO  
CAT. 2



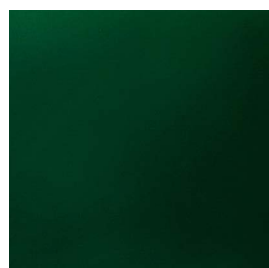
BS GULP/15 CUBA  
CAT. 4



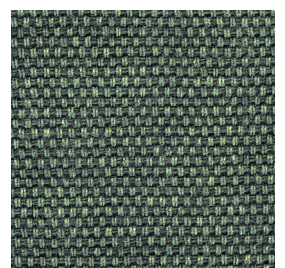
TB117 BS MAYA/27 PETROLIO  
CAT. 3



LAGUNA/48 INCANTO  
CAT. 1

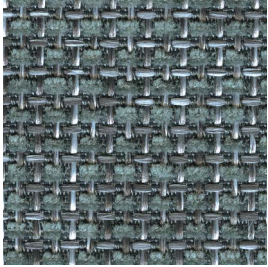
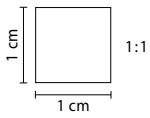


TB117 BS AMS/48 RABBIA  
CAT. 2



BS SMILE/35 ARSENICO  
CAT. 1

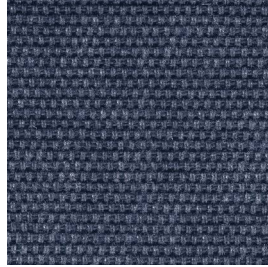




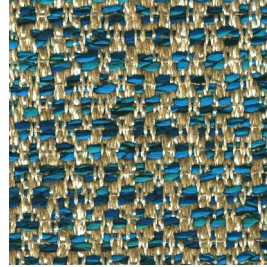
**TB117** EGEO/27 ZUCCHERO  
**BS** CAT. 2



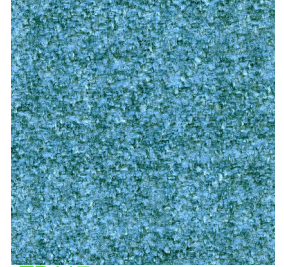
**TB117** T101/29 ANTARTIDE  
**BS** CAT. 2



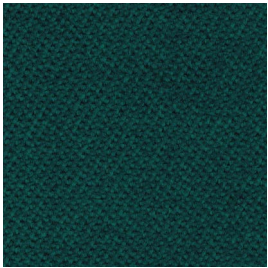
MOGANI/11537 POSITANO  
CAT. 1



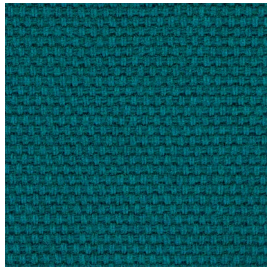
**TB117** HARUKA/321 ISOLA  
CAT. 3



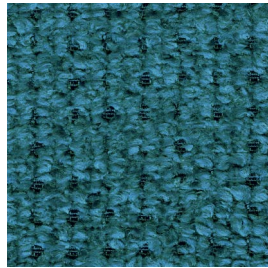
**TB117** ZAK/14 AZZURRO WOOL  
**BS** CAT. 2



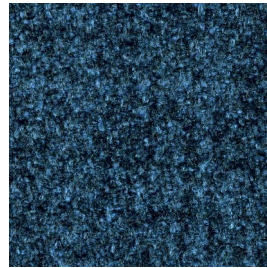
AVRON 2916 NAVY  
CAT. 3



**BS** SMILE/31 MYKONOS  
CAT. 1



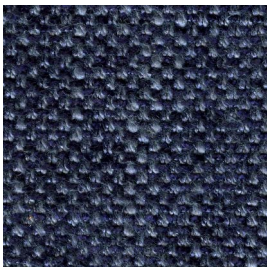
T221/16 DELFINO  
CAT. 1



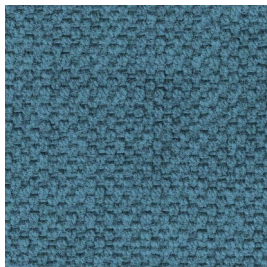
**TB117** **BS** ZAK/15 BLU WOOL  
CAT. 2



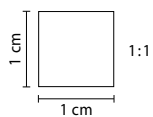
**TB117** T116/16 DENIM  
CAT. 2



**TB117** 1810/60 BLU MARE  
CAT. 3



**TB117** 1407/06 ABISSI  
CAT. 2



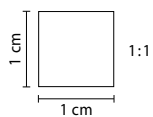
637/26 LATTE  
CAT. 2



637/4 SANDALO  
CAT. 2



637/6 TOGO  
CAT. 2



BOXLAND/7732 ORSO  
CAT. PELLE - LEATHER



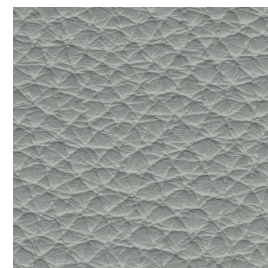
PANAMA/5504 TERRA  
CAT. PELLE - LEATHER



PANAMA/5270 FONDENTE  
CAT. PELLE - LEATHER



PANAMA/5310 LAVA  
CAT. PELLE - LEATHER



BOXLAND/7733 GREY  
CAT. PELLE - LEATHER

Nome Name	Cod. Articolo Cod. Article	Cat.	H.	Composizione Composition	Res. Luce Res. light	Martindale (cicli) Martindale (cycles)	Ignifugo	Idrorep.	Lavaggio Washing
637	TEX637	2	137	8%PU 70%PVC 22%PL	6+	50.000	CLASSE 1		
1407	TEX1407	2	140	63CO 37%LI	4	32.500			
1810	TEX1810	3	140	33%PL 31%CO 21%VI 10%LI	4/5	80.000			
1985	TEX1985	2	140	100%PL	5	100.000	BS5852 TB117		
1986	TEX1986	1	140	100%PL	6	40.000	BS5852		
5120	TEX5120	3	140	56%VI 30%PL 14%CO	4/5	70.000			
14832	TEX14832	1	140	33%VI 23%CO 22%PES 14%LI 6%AC 2%AF	4	15.000	BS5852		
AMS	TEXAMS	2	140	100%PL	5	100.000	BS5852	SI	
AVRON	TEXAVRON	3	140	100%PL	4	50.000			
BOGART	TEXBOGART	2	140	73%PL 27%AC	4/5	100.000			
CHEVRON	TEXCHEVRON	3	140	36%VI 24%CO 24%PL 16%LI	4/5	25.000			
COLMAR	TEXCOLMAR	2	140	52%PL 41%AC 7%LI	4/5	80.000	BS5852		
DOROTY	TEXDOROTY	2	143	92%PL 8%CO	5	100.000	BS5852	SI	
EGEO	TEXEGEO	2	140	100%PL	4/5	40.000	BS5852	SI	
ELISSOS	TEXELI	3	140	30%PL 28%PC 21%VI 12%CO 9%LI	3/4	30.000			
GUAREI	TEXGUAREI	2	140	77%PL 17%CO 6%PC	4/5	50.000			
GULP	TEXGULP	4	140	56%CO 44%VI	6	40.000	BS5852 TB117:2015	SI	
HARUKA	TEXHARUKA	3	140	41%CO 59%PL	5	30.000		SI	
INKA	TEXINKA	3	140	57%VI 21%PL 15%CO 7%LI	4/5	26.500			
JOKER	TEXJOKER	2	140	100%PL	5	45.000			
KATMANDU	TEXKAT	4	146	36%VI 32%LI 24%PC 4%PA 4%PL	3/4	25.000			
LAGUNA	TEXLAGUNA	1	140	92%PL 8%CO	4	50.000			
MAYA	TEXMAYA	3	140	40%VI 20%PL 20%LI 20%CO	4	24.000	BS5852		
MOGANI	TEXMOGANI	1	140	100%CO	4/5	25.000			
MYSTIC	TEXMYSTIC	2	140	100%PES	4/5	150.000		SI	
NANAO	TEXNANAO	3	140	40%CO 60%PL	5	50.000		SI	
NUUR	TEXNUUR	3	140	30%CO 23%VI 21%PL 16%PC 10%LI	3/4	30.000			
PASCIA	TEXPASCIA	3	140	33%PL 27%CC 17%LI 17%PC	5	20.000	BS5852 TB117:2013		
PASTELLO	TEXPASTELLO	2	140	85%PL 15%VI	5	50.000			
PETIT	TEXPETIT	1	140	100%PL	4	40.000	TB117:2013	SI	
RITZ	TEXRITZ	1	140	86%PL 14%PA	4	30.000	TB117:2013	SI	



Nome Name	Cod. Articolo Cod. Article	Cat.	H.	Composizione Composition	Res. Luce Res. light	Martindale (cicli) Martindale (cycles)	Ignifugo	Idrorep.	Lavaggio Washing
ROGER	TEXROGER	1	140	55%PL 45%PP	5	40.000			
SINFONIA	TEXSINF	3	140	64%CO 36%PL	4	20.000			
SMILE	TEXSMILE	1	140	100%CO	4/5	32.000	BS5852 TB117		
T101	TEXT101	2	140	302%VI 24%PL 24%CO 22%LI	4	24.000	BS5852 TB117:2013		
T114	TEXT114	2	140	100%PL	4/5	60.000			
T116	TEXT116	2	140	100%CO	5/6	20.000			
T124	TEXT124	4	140	60%VI 18%CO 12%LI 10%PL	4/5	25.000			
T221	TEXT221	1	140	90%PL 10%PA	5	40.000			
T227	TEXT227	2	140	97%PL 3%LI	5	100.000			
T230	TEXT230	1	140	100%PL	4	70.000			
VALENCIA	TEXVAL	2	140	49%PL 51%CO	5	40.000		SI	
VEGA	TEXVEGA	3	140	100%PL	4/5	40.000	BS5852		
ZAK	TEXZAK	2	140	100%PL	5	51.000	BS5852 TB117		

Articolo Article	Cat.	Composizione Composition	Res. Luce Res. light	Martindale (cicli) Martindale (cycles)	Ignifugo Flameproof
TEXPANAMA	PELLE LEATHER	Pelle bovina di origine Europea conciata al cromo Chrome tanned cattle hide originating in Europe	6+	50.000	UNI EN 1021 - 1 - 2TB117
TEXBOXLAND	PELLE LEATHER	Pelle di origine bovina conciata al cromo Chrome tanned cattle hide	6+	50.000	UNI EN 1021 - 1 - 2TB117

## PULIZIA E MANUTENZIONE - CLEANING AND MAINTENANCE



**Evitare la luce diretta del sole**  
*Avoid direct sunlight*



**Evitare l'esposizione a fonti di calore**  
*Avoid exposure to heat sources*



**Spolverare regolarmente la pelle con un panno morbido e asciutto**  
*Dust the leather regularly with a soft, dry cloth*



**Eventuali macchie si possono eliminare usando un panno inumidito con acqua e sapone neutro**  
*Any stains can be removed using a damp cloth and neutral soap*



**Asciugare immediatamente dopo il trattamento**  
*Dry immediately after treatment*



**Non strofinare, ma tamponare delicatamente dai bordi al centro della macchia**  
*Do not rub, but delicately dab from the edge towards the centre of the stain*

## CERTIFICAZIONI - CERTIFICATIONS



UNI 11239



ISO 14025



ISO 14067/CD2



RAL-UZ 148



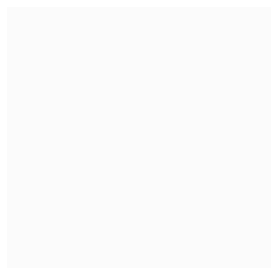
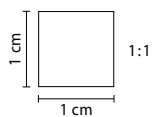
RAL-GZ 430



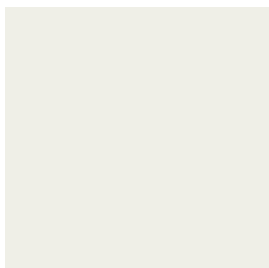
# MELAMINICI - MELAMINE

---

clei



BIANCO



PERLA



GRAFITE



NOCE



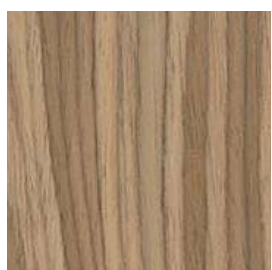
ROVERE SABBIA



ROVERE MORO

# ESSENZE - WOOD

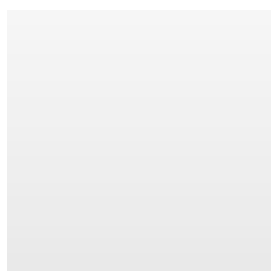
---



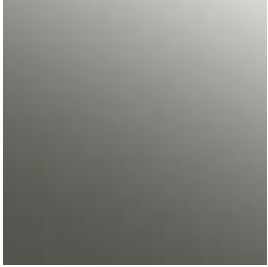
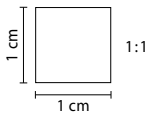
NOCE DOGATO  
WAVY WALNUT

# DIALUX

---



BIANCO LUCIDO  
GLOSSY WHITE



SPECCHIO FUMÉ  
MIRROR FUMÉ

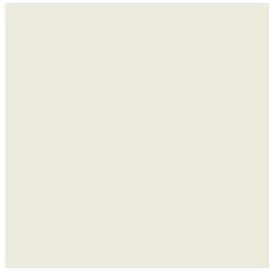
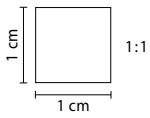


TRASPARENTE  
TRASPARENT

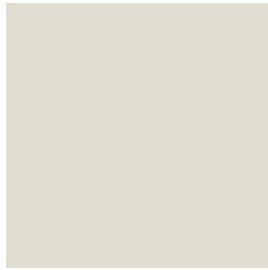


# LACCATURE - LACQUARED COLOUR SYSTEM

clei



DOVER



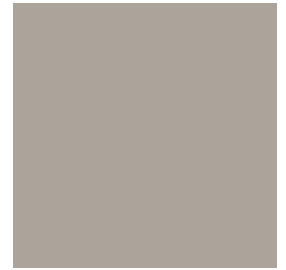
TALCO



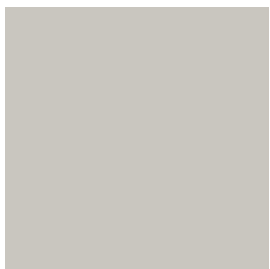
SAND



DESERTO



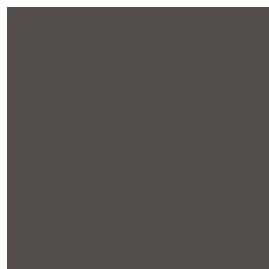
ARIZONA



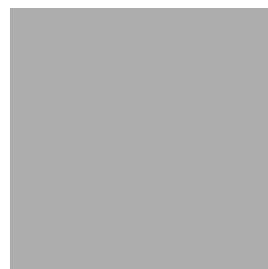
CENERE



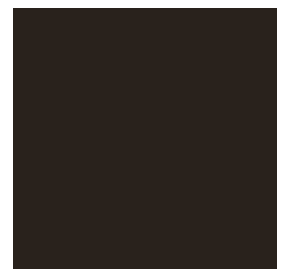
ANTRACITE



CACAO



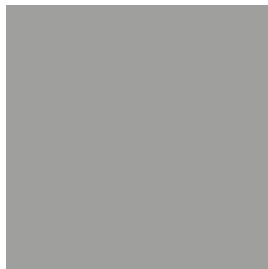
ALLUMINIO



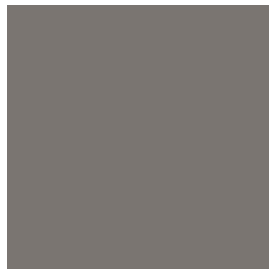
ONICE



NERO



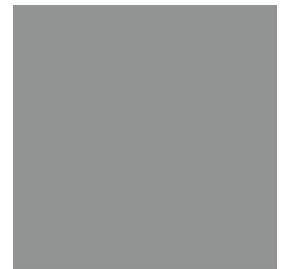
FUMIO



LONDRA



PELTRO



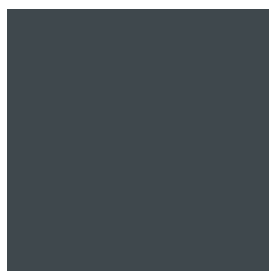
TORRENTE



INDIO



AZZURRO POLVERE



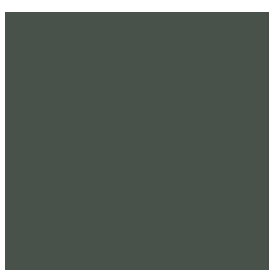
NOTTE



PISTACCHIO



FIORDO



BORNEO



TUFO



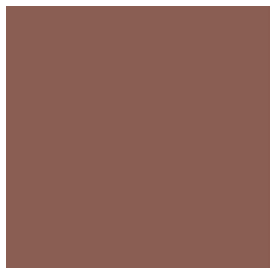
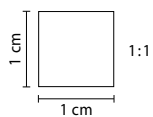
SENAPE



IVREA



PESCA



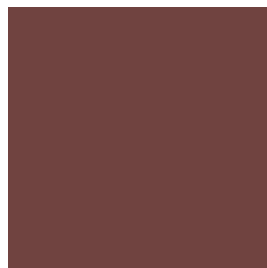
TERRACOTTA



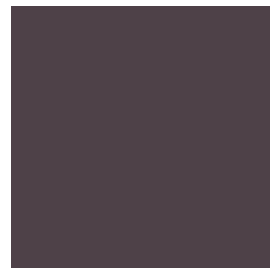
MANGO



CARDINALE



POMPEI



PRUGNA



## Wave - Quadra - Petalo - Dot

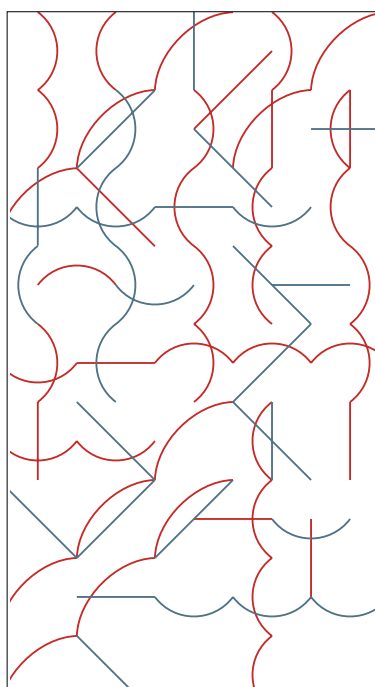
La stampa digitale viene eseguita solo su pannelli di facciata, su base nella finitura laccata dover e nelle configurazioni standard rappresentate. Le proporzioni delle stampe variano in base alla dimensione del pannello di facciata. Le caratteristiche e il colore della stampa sono indicative e potrebbero cambiare con ragionevole tolleranza.

*The digital printing is carried out only on front panels, on lacquered Dover finish base and in the fixed configurations shown.*

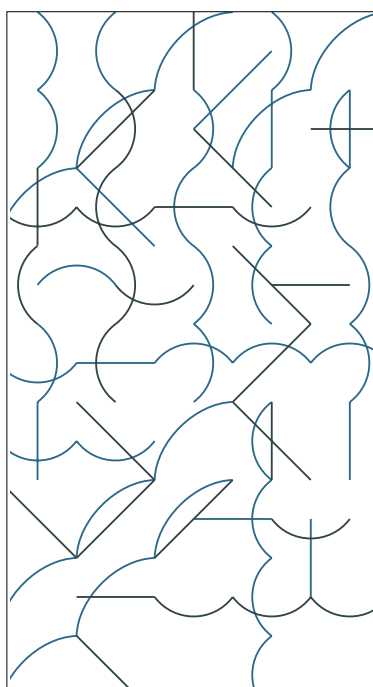
*Proportions of prints vary according to the size of the front panel.*

*Features and colours of print are indicative and could vary with reasonable tolerance.*

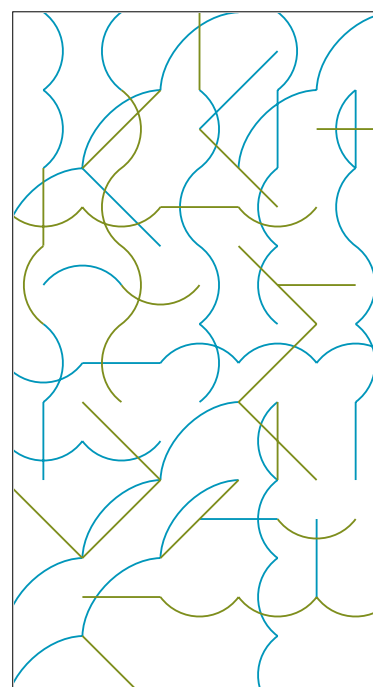
## VERSIONE WAVE



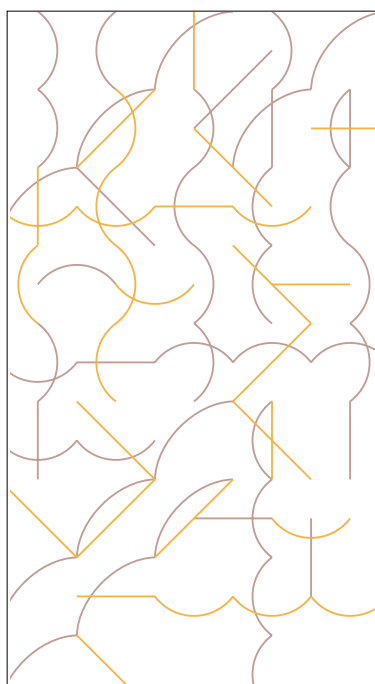
MANGO, AZZURRO POLVERE



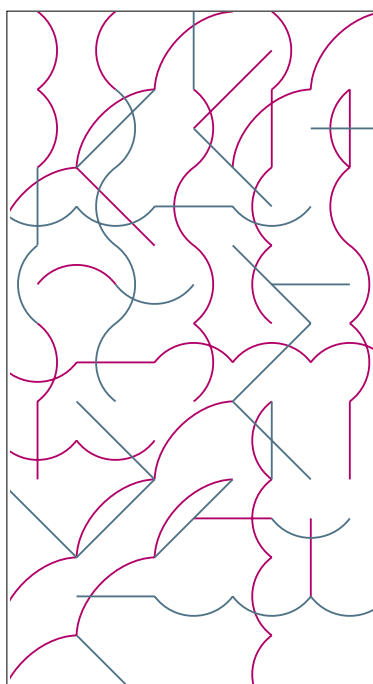
TIMO, INDIO



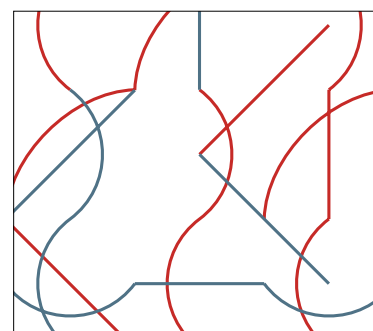
CAPRI, KIWI



CIPRIA, ORZO

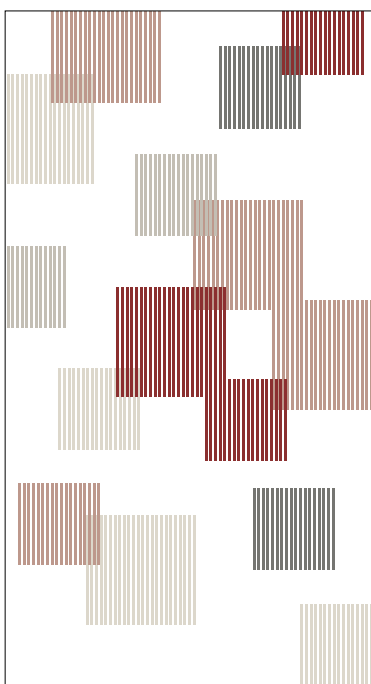


PEONIA, AZZURRO POLVERE



DETTAGLIO

VERSIONE QUADRA



SAND, CANAPA, SALVIA,  
MAROCCO, CIPRIA



SAND, CANAPA, ABISSO,  
INDIO, TIMO



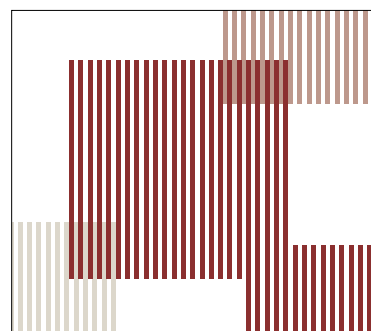
SAND, CANAPA, CAFFÈ,  
TIBET, HOLLAND



SAND, CANAPA, CAFFÈ,  
DANUBIO, NETTARE



SAND, CANAPA, ABISSO,  
FANGO, ARGILLA



DETTAGLIO

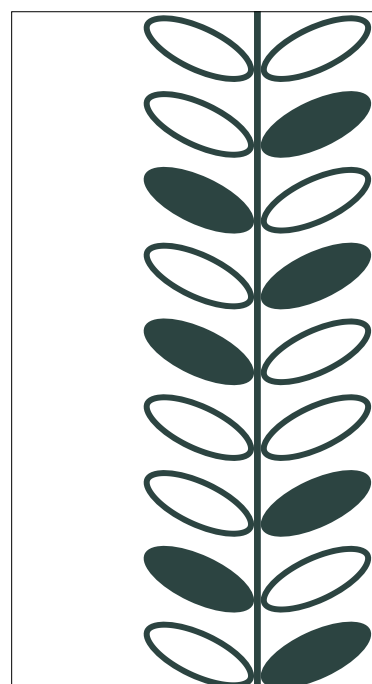
VERSIONE PETALO



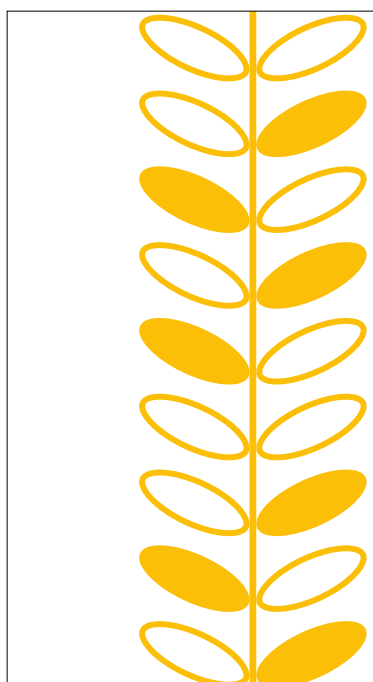
SAND



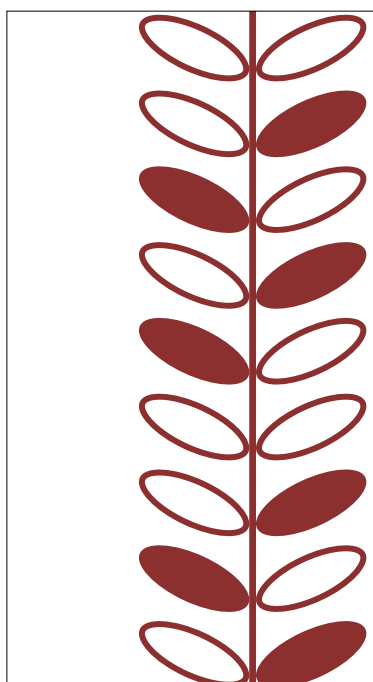
ARGILLA



INDIO



ORZO



MARGOLLO



DETTAGLIO

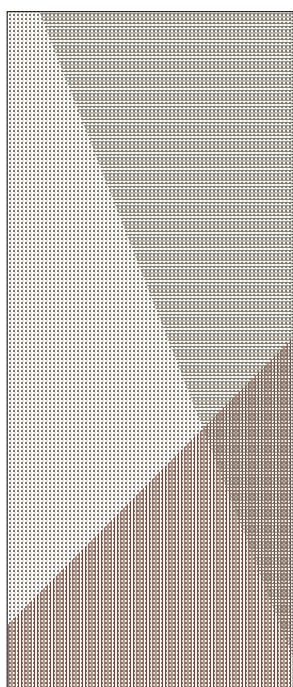


## Dot

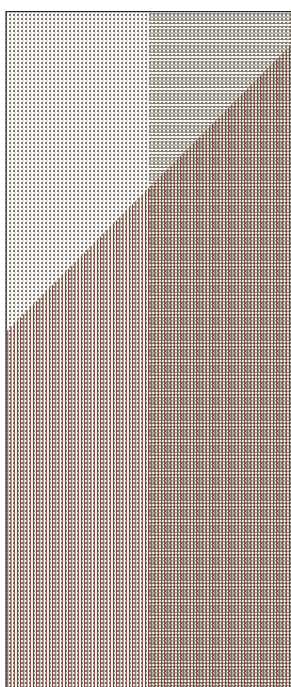
Solo per modello Ella & Louis

*Only for model Ella & Louis*

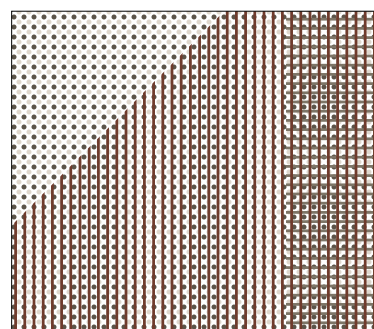
### VERSIONE DOT



DOT SX



DOT DX



DETTAGLIO

# STAMPA A RILIEVO 3D - 3D RELIEF PRINTING

clei

Solo per modello Tonale.

La stampa in 3D viene eseguita solo sui pannelli di facciata, su base nella finitura melaminico bianco e nella configurazione standard rappresentata, e in secondo tempo verniciata nei colori selezionati dalla cartella Cleicoloursystem.

Le caratteristiche ed il colore sono indicative e potrebbero cambiare con ragionevole tolleranza. Con l'ordine e la relativa conferma, il committente accetta tali tolleranze.

*Only for model Tonale.*

*3D printing is carried out only on front panels, on melamine white finish base, and in the fixed configurations shown, and afterwards painted in one colour of the Cleicoloursystem.*

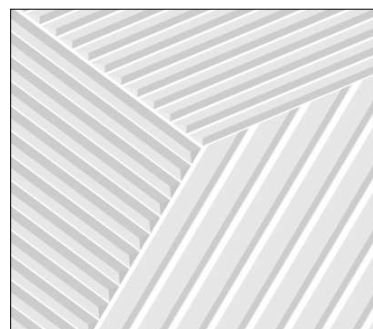
*Features and colours of print are indicative and could vary with reasonable tolerance.*

*Upon the order and validation of the related confirmation of order, customer accepts these tolerances.*



## **Colori abbinabili alla stampa 3D** **Colours matchable to 3D printing.**

- Laccato Dover
- Laccato Sand
- Laccato Deserto
- Laccato Terracotta
- Laccato Antracite
- Laccato Cacao
- Laccato Borneo
- Laccato Cardinale



DETTAGLIO

IT \_ I colori e le finiture visualizzate in questo documento sono puramente indicativi e possono differire dagli originali. L'azienda si riserva il diritto di apportare modifiche ai propri colori di serie in qualsiasi momento e senza alcun obbligo di preavviso.

EN \_ Colours and finishes shown in this document are approximate and may differ from actual ones. The company reserves the right to make modifications to this list at any time and without prior notice.