

BONALDO

Belt & Cross

Designer: **Alain Gilles**



The padded top section is the same in both Belt and Cross, with no straight lines but only curved surfaces that gently complement each other, gracefully floating on their base. They are distinguished by their bases, which give each of them a distinct personality: the Belt pouf's round metal base plays with the concept of stability, while Cross' cross-shaped wooden base is the detail that makes this

accessory immediately recognisable. While their similarities make them ideal for pairing together, like two members of the same family with opposing personalities that complement each other, it is their differences and the variety of possible combinations that create a dynamic, lively and constantly changing environment.



Data sheet



Belt

Width:44cm
Depth:44cm
Height:48cm

Cross

Width:44cm
Depth:44cm
Height:48cm

Cover

Leather



Leather Ponza Leather Ponza Leather Ponza Leather Ponza Leather Ponza Leather Ponza Leather Capri Leather Capri

A01

A02

A03

A04

A05

A06

L08

L30



Leather Capri Leather Capri Leather Capri Leather Capri Leather Capri Leather Capri Leather Capri Leather Capri

L26

L01

L04

L27

L37

L51

L53

L54

Fabric - 900



Fabric - Azimut
9B02

Fabric - Azimut
9B08

Fabric - Azimut
9B17

Fabric - Azimut
9B22

Fabric - Azimut
9B26

Fabric - Azimut
9B36

Fabric - Azimut
9B39

Fabric - Azimut
9B42



Fabric - Azimut
9B44



Fabric - Azimut
9B48

Fabric - Must



Fabric - Boemian
MC40



Fabric - Boemian
MC43



Fabric - Boemian
MC46



Fabric - Boemian
MC47



Fabric - Boemian
MC49



Fabric - Rico
MA02



Fabric - Rico
MA04



Fabric - Rico
MA07



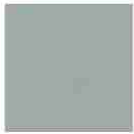
Fabric - Rico
MA09



Fabric - Rico
MA11



Fabric - Rico
MA20



Fabric - Rico
MA22



Fabric - Rico
MC39



Fabric - St. Moritz
MC60



Fabric - St. Moritz
MC61



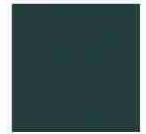
Fabric - St. Moritz
MC62



Fabric - St. Moritz
MC67



Fabric - St. Moritz
MC69



Fabric - St. Moritz
MC76



Fabric - St. Moritz
MC81



Fabric - St. Moritz
MC83



Fabric - St. Moritz
MC85



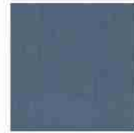
Fabric - Flora
MD30



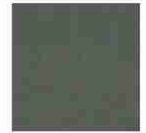
Fabric - Flora
MD31



Fabric - Flora
MD32



Fabric - Flora
MD34



Fabric - Flora
MD35



Fabric - Flora
MD37



Fabric - Flora
MD39



Fabric - Nacchero
MD41



Fabric - Nacchero
MD44



Fabric - Nacchero
MD45



Fabric - Nacchero
MD47



Fabric - Nacchero
MD48

Fabric - Special



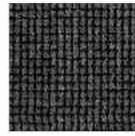
**Fabric -
Brionne**
SP19



**Fabric -
Brionne**
SP20



**Fabric -
Brionne**
SP21



**Fabric -
Brionne**
SP22



**Fabric -
Brionne**
SP23



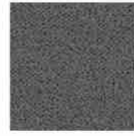
Fabric - Rella
SP01



Fabric - Rella
SP04



Fabric - Rella
SP05



Fabric - Rella
SP06



Fabric - Rella
SP07



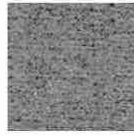
**Fabric -
Diamon Frisé**
SP31



**Fabric -
Diamon Frisé**
SP33



**Fabric -
Diamon Frisé**
SP34



**Fabric -
Diamon Frisé**
SP36



**Fabric -
Diamon Frisé**
SP38



Fabric - Baia
SP45



Fabric - Baia
SP48



Fabric - Baia
SP50



Fabric - Baia
SP51



Fabric - Baia
SP52



Fabric - Jurga
SP54



Fabric - Jurga
SP55



Fabric - Jurga
SP57



Fabric - Jurga
SP58

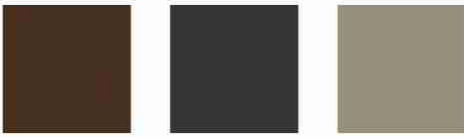
Base - Belt

Metal



Painted metal Mat white **Painted metal** Mat black **Painted metal** Mat dove grey **Painted metal** Mat anthracite grey **Metal** Supreme anthracite

Plus Metal



Painted metal Mat bronze **Painted metal** Mat lead **Painted metal** Mat pearl gold

Special Metal



Metal finish Clouded chrome **Metal finish** Brown nickel **Metal finish** Dark nickel

Base - Cross

Wood



Veneered wood Walnut Canaletto **Veneered wood** Coal ash

The samples above represent the complete range of materials and finishes available for this product (regardless of the top shape or size, in the case of tables). Fabrics, eco-leather, leather and emery leather shown in this website are a selection. Colors and finishes are approximate and may slightly differ from actual ones. Please visit Bonaldo dealers to see the complete sample collection and get further details about our products.