

Ditre Italia Products

2023

Pelle
Leathers

CAL TB 117

DITRE
italia



VOGUE 401



VOGUE 402



VOGUE 403



VOGUE 404



VOGUE 407



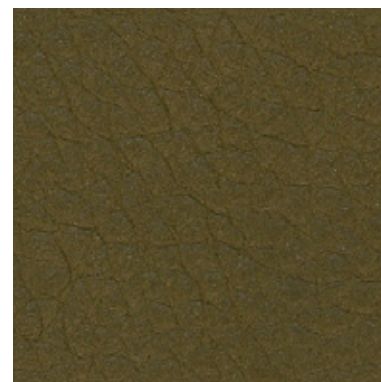
VOGUE 409



VOGUE 410



VOGUE 412



VOGUE 418



VOGUE 421

INFORMAZIONI TECNICHE / TECHNICAL INFORMATION

Tipologia / Type	pieno fiore/ full grain
Origine / origin	pelli bovine / cowhide
Provenienza / provenance	europa / european
Concia / tanning	sali di cromo / chrome salt
Tintura / dye	anilina passante in botte sottovuoto /aniline drum dyeing
Spessore / thickness	1,3/1,5 mm

TEST FISICI / PHYSICAL TESTS

solidità del colore alla luce: >2/3 scala blu	colour light fastness : >2/3 blu scale
solidità del colore allo strofinio a secco 50 cicli:	colour fastness to the 50 dry-rubbing: >3 grey scale
>3 scala grigi	colour fastness to the 20 wet-rubbing: >2/3 grey scale
solidità del colore allo strofinio a umido 20 cicli:	
>2/3 scala grigi	



VOGUE 422



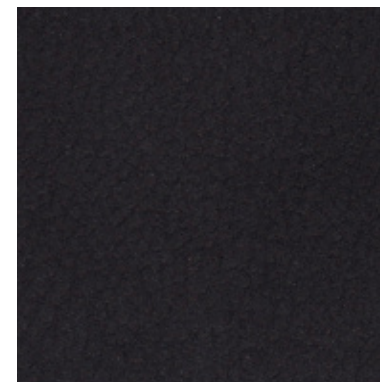
VOGUE 423



VOGUE 424



VOGUE 425



VOGUE 426

INFORMAZIONI TECNICHE / TECHNICAL INFORMATION

Tipologia / Type	pieno fiore/ full grain
Origine / origin	pelli bovine / cowhide
Provenienza / provenance	europa / european
Concia / tanning	sali di cromo / chrome salt
Tintura / dye	anilina passante in botte sottovuoto /aniline drum dyeing
Spessore / thickness	1,3/1,5 mm

TEST FISICI / PHYSICAL TESTS

solidità del colore alla luce: >2/3 scala blu	colour light fastness : >2/3 blu scale
solidità del colore allo strofinio a secco 50 cicli:	colour fastness to the 50 dry-rubbing: >3 grey scale
>3 scala grigi	colour fastness to the 20 wet-rubbing: >2/3 grey scale
solidità del colore allo strofinio a umido 20 cicli:	
>2/3 scala grigi	



VENICE 001



VENICE 002



VENICE 003



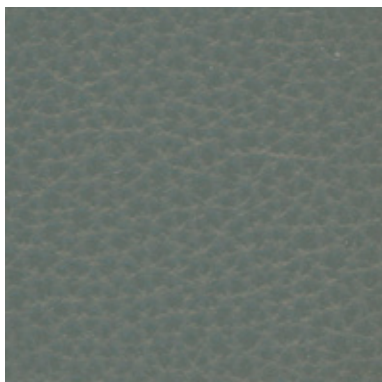
VENICE 004

INFORMAZIONI TECNICHE / TECHNICAL INFORMATION

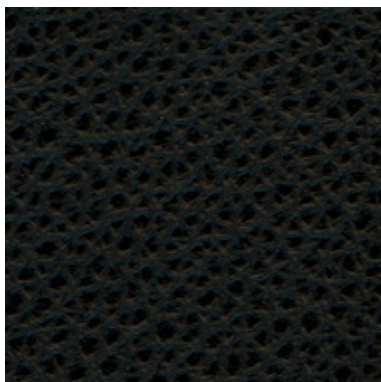
Tipologia / Type	pieno fiore/ full grain
Origine / origin	pelli bovine / cowhide
Provenienza / provenance	europea / european
Concia / tanning	sali di cromo / chrome salt
Tintura / dye	all'anilina passante in botte sotto vuoto / aniline through
Spessore / thickness	0,9/1,1 mm

TEST FISICI / PHYSICAL TESTS

solidità del colore alla luce: 4/5	colour light fastness : 4/5
solidità del colore allo strofinio a secco: 500 cicli	colour fastness to the dry-rubbing: 500 cycles
solidità del colore allo strofinio a umido: 80 cicli	colour fastness to the wet-rubbing: 80 cycles



POLAR 204



POLAR 207



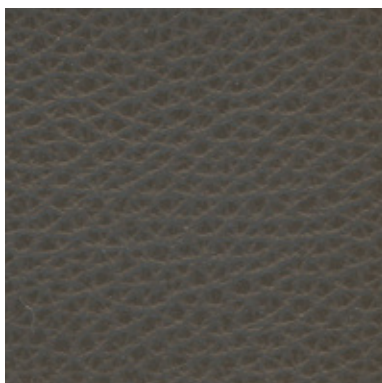
POLAR 208



POLAR 209



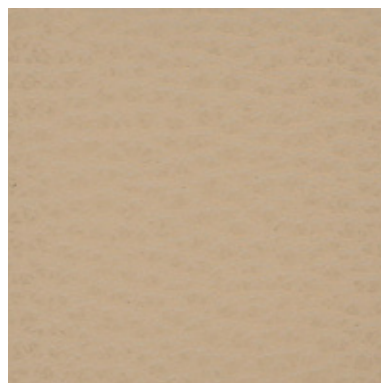
POLAR 210



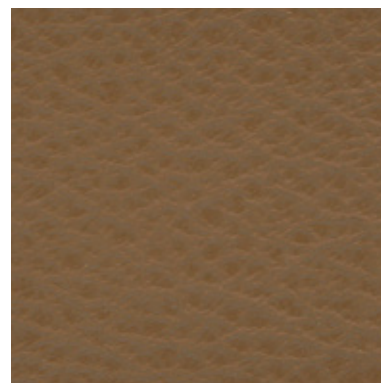
POLAR 211



POLAR 212



POLAR 214



POLAR 216



POLAR 217

INFORMAZIONI TECNICHE / TECHNICAL INFORMATION

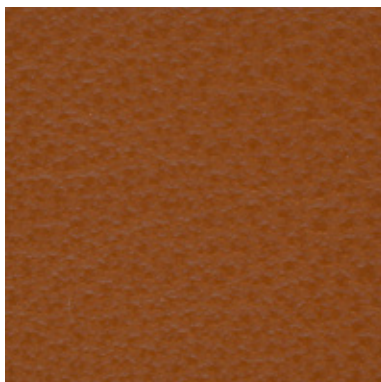
Tipologia / Type	fiore corretto/ full grain
Origine / origin	pelli bovine / cowhide
Provenienza / provenance	mondiale / worldwide
Concia / tanning	sali di cromo / chrome salt
Tintura / dye	in botte passante / in barrels
Spessore / thickness	1,2/1,4 mm

TEST FISICI / PHYSICAL TESTS

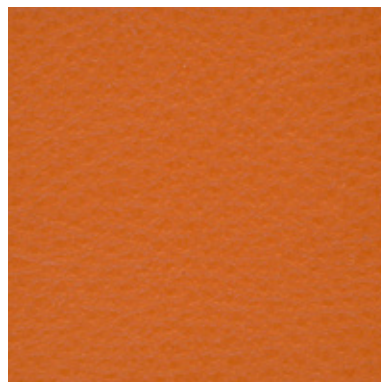
solidità del colore alla luce: 5	colour light fastness : 5
solidità del colore allo strofinio a secco 500 cicli: >4	colour fastness to the dry-rubbing 500 cycles: >4
solidità del colore allo strofinio a umido 250 cicli: >4	colour fastness to the wet-rubbing 250 cycles: >4
solidità alla flessione 50.000 cicli: nessun danno	fastness to the bending 50.000: cycles no damage



POLAR 218



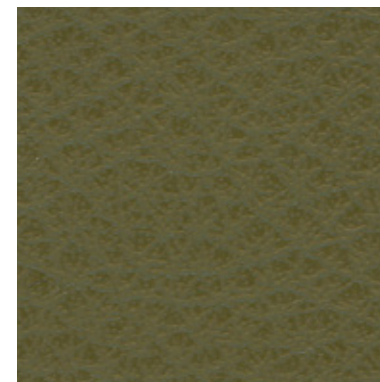
POLAR 223



POLAR 246



POLAR 251



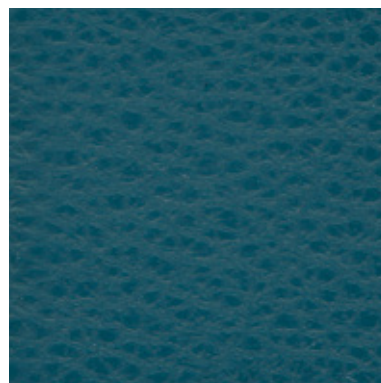
POLAR 257



POLAR 264



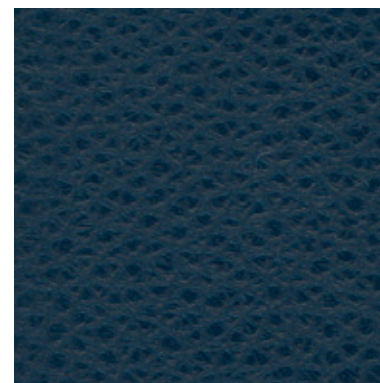
POLAR 266



POLAR 270



POLAR 271



POLAR 275

INFORMAZIONI TECNICHE / TECHNICAL INFORMATION

Tipologia / Type	fiore corretto/ full grain
Origine / origin	pelli bovine / cowhide
Provenienza / provenance	mondiale / worldwide
Concia / tanning	sali di cromo / chrome salt
Tintura / dye	in botte passante / in barrels
Spessore / thickness	1,2/1,4 mm

TEST FISICI / PHYSICAL TESTS

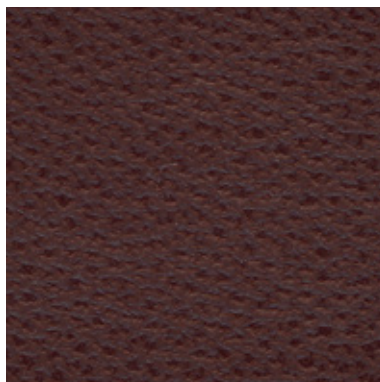
solidità del colore alla luce: 5	colour light fastness : 5
solidità del colore allo strofinio a secco 500 cicli: >4	colour fastness to the dry-rubbing 500 cycles: >4
solidità del colore allo strofinio a umido 250 cicli: >4	colour fastness to the wet-rubbing 250 cycles: >4
solidità alla flessione 50.000 cicli: nessun danno	fastness to the bending 50.000: cycles no damage



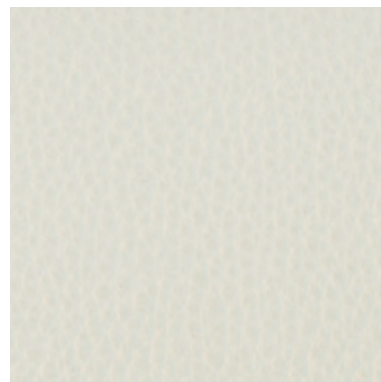
POLAR 277



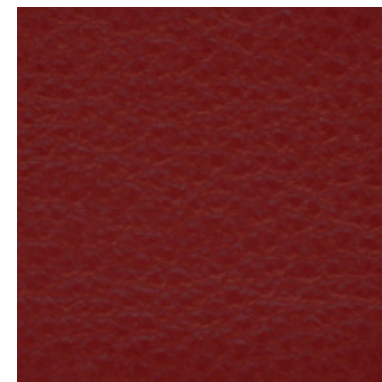
POLAR 281



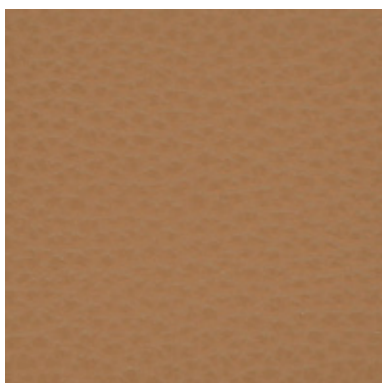
POLAR 284



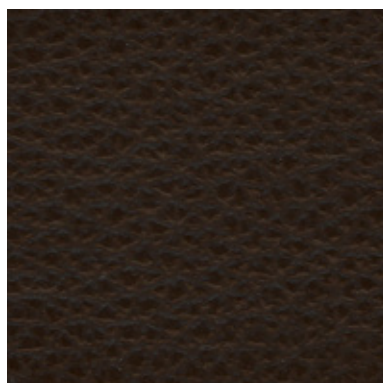
POLAR 286



POLAR 288



POLAR 295



POLAR 298



POLAR 304



POLAR 398



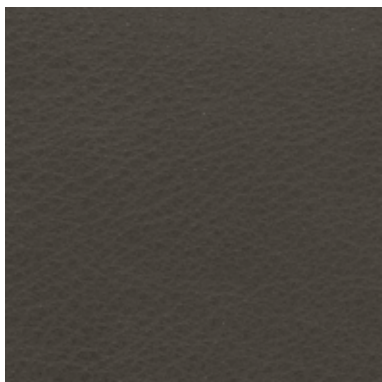
POLAR 399

INFORMAZIONI TECNICHE / TECHNICAL INFORMATION

Tipologia / Type	fiore corretto/ full grain
Origine / origin	pelli bovine / cowhide
Provenienza / provenance	mondiale / worldwide
Concia / tanning	sali di cromo / chrome salt
Tintura / dye	in botte passante / in barrels
Spessore / thickness	1,2/1,4 mm

TEST FISICI / PHYSICAL TESTS

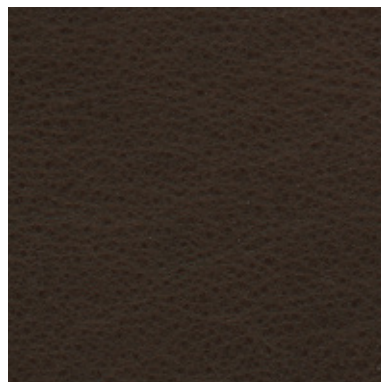
solidità del colore alla luce: 5	colour light fastness : 5
solidità del colore allo strofinio a secco 500 cicli: >4	colour fastness to the dry-rubbing 500 cycles: >4
solidità del colore allo strofinio a umido 250 cicli: >4	colour fastness to the wet-rubbing 250 cycles: >4
solidità alla flessione 50.000 cicli: nessun danno	fastness to the bending 50.000: cycles no damage



PISA 001



PISA 002



PISA 003



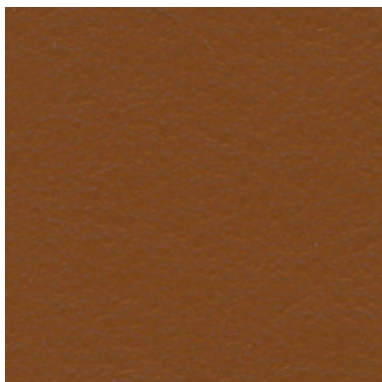
PISA 004

INFORMAZIONI TECNICHE / TECHNICAL INFORMATION

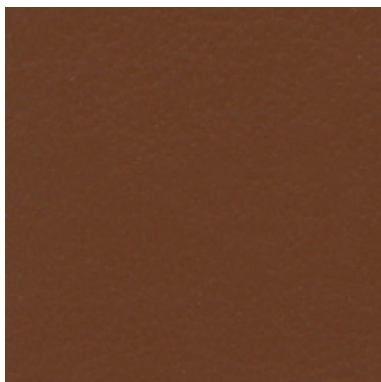
Tipologia / Type	pieno fiore / full grain
Origine / origin	pelli bovine / cowhide
Provenienza / provenance	europea / european
Concia / tanning	sali di cromo / chrome salt
Tintura / dye	in botte con anilina / in barrels
Spessore / thickness	1,0/1,2 mm

TEST FISICI / PHYSICAL TESTS

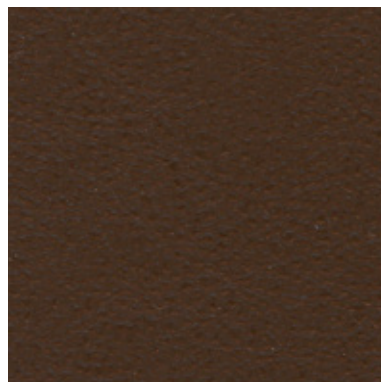
solidità del colore alla luce: 3	colour light fastness : 3
solidità del colore allo strofinio a secco: 50 cicli	colour fastness to the dry-rubbing: 50 cycles
solidità del colore allo strofinio a umido: 20 cicli	colour fastness to the wet-rubbing: 20 cycles



LISBONA 202



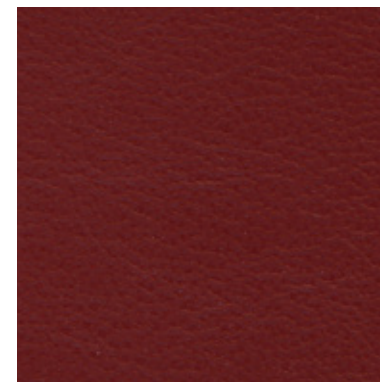
LISBONA 203



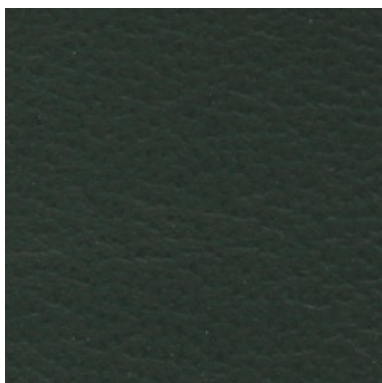
LISBONA 204



LISBONA 209



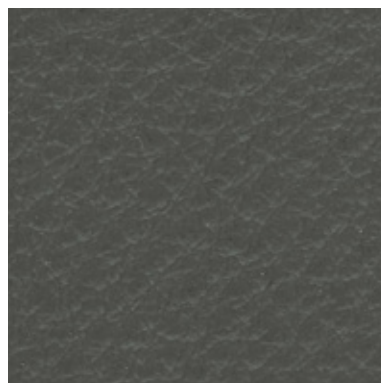
LISBONA 210



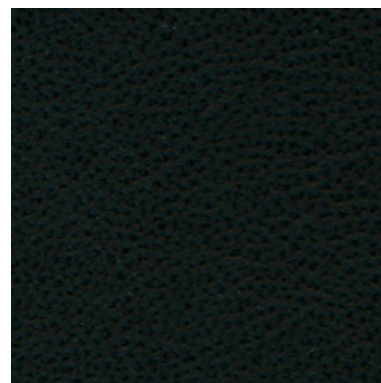
LISBONA 213



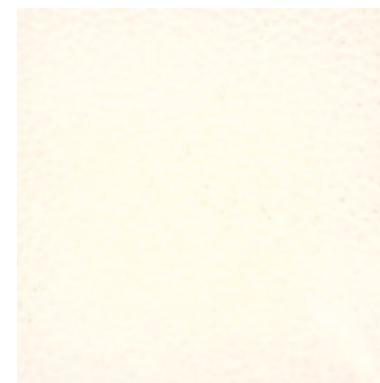
LISBONA 216



LISBONA 218



LISBONA 220



LISBONA 225

INFORMAZIONI TECNICHE / TECHNICAL INFORMATION

Tipologia / Type	fiore corretto/ full grain
Origine / origin	pelli bovine / cowhide
Provenienza / provenance	europea / european
Concia / tanning	sali di cromo / chrome salt
Tintura / dye	all'anilina / aniline dyed
Spessore / thickness	0,9/1 mm

TEST FISICI / PHYSICAL TESTS

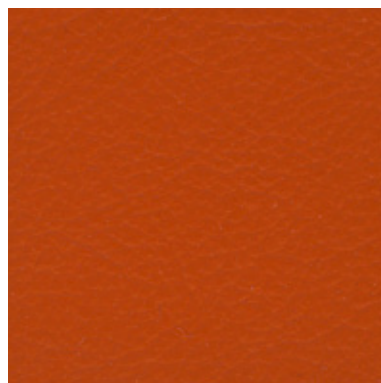
solidità del colore alla luce: > 7	colour light fastness : > 7
solidità del colore allo strofinio a secco 500 cicli: >4/5	colour fastness to the dry-rubbing 500 cycles: >4/5
solidità del colore allo strofinio a umido 250 cicli: >4/5	colour fastness to the wet-rubbing 250 cycles: >4/5
solidità alla flessione >50.000 cicli	fastness to the bending >50.000 cycles



LISBONA 229



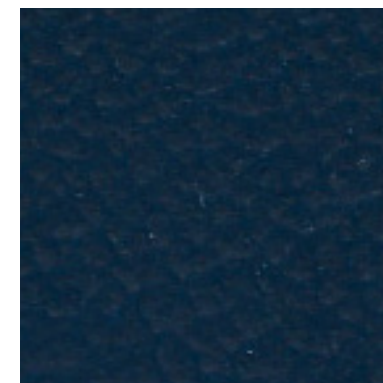
LISBONA 232



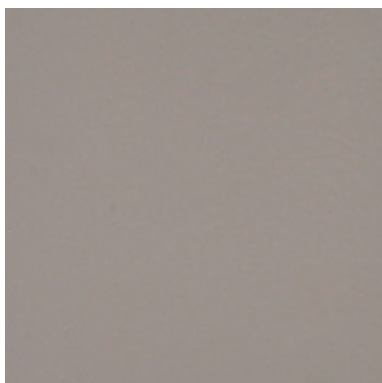
LISBONA 233



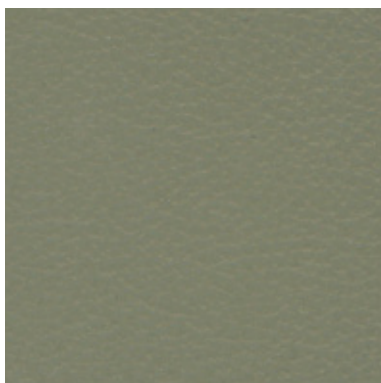
LISBONA 238



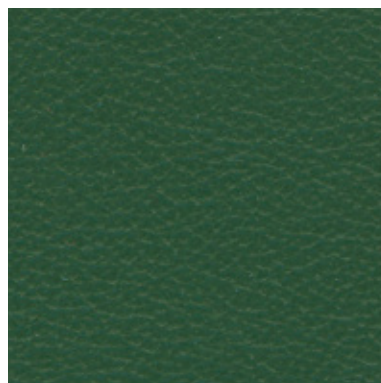
LISBONA 239



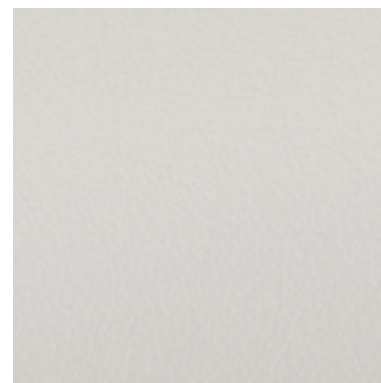
LISBONA 240



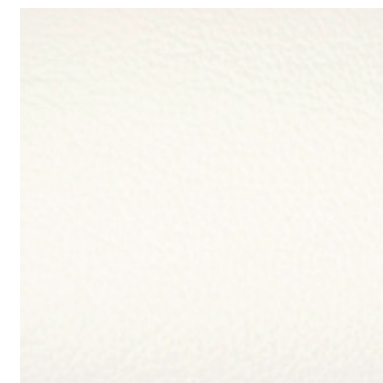
LISBONA 241



LISBONA 242



LISBONA 249



LISBONA 259

INFORMAZIONI TECNICHE / TECHNICAL INFORMATION

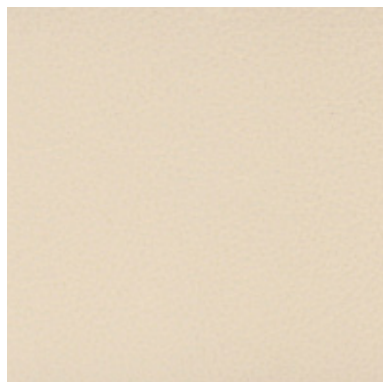
Tipologia / Type	fiore corretto/ full grain
Origine / origin	pelli bovine / cowhide
Provenienza / provenance	europea / european
Concia / tanning	sali di cromo / chrome salt
Tintura / dye	all'anilina / aniline dyed
Spessore / thickness	0,9/1 mm

TEST FISICI / PHYSICAL TESTS

solidità del colore alla luce: > 7	colour light fastness : > 7
solidità del colore allo strofinio a secco 500 cicli: >4/5	colour fastness to the dry-rubbing 500 cycles: >4/5
solidità del colore allo strofinio a umido 250 cicli: >4/5	colour fastness to the wet-rubbing 250 cycles: >4/5
solidità alla flessione >50.000 cicli	fastness to the bending >50.000 cycles



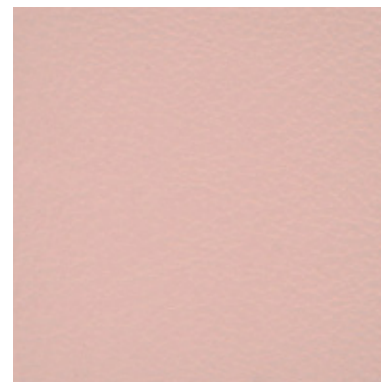
LISBONA 266



LISBONA 267



LISBONA 268



LISBONA 278

INFORMAZIONI TECNICHE / TECHNICAL INFORMATION

Tipologia / Type	fiore corretto/ full grain
Origine / origin	pelli bovine / cowhide
Provenienza / provenance	europea / european
Concia / tanning	sali di cromo / chrome salt
Tintura / dye	all'anilina / aniline dyed
Spessore / thickness	0,9/1 mm

TEST FISICI / PHYSICAL TESTS

solidità del colore alla luce: > 7	colour light fastness : > 7
solidità del colore allo strofinio a secco 500 cicli: >4/5	colour fastness to the dry-rubbing 500 cycles: >4/5
solidità del colore allo strofinio a umido 250 cicli: >4/5	colour fastness to the wet-rubbing 250 cycles: >4/5
solidità alla flessione >50.000 cicli	fastness to the bending >50.000 cycles

**DITRE
italia**

31016 Cordignano (Treviso) Zona Industriale Via del Lavoro, 21
Tel. +39.0438.9999 Fax +39.0438.999993 www.ditreitalia.it info@ditreitalia.it